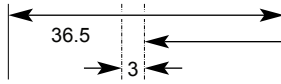
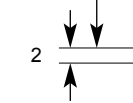
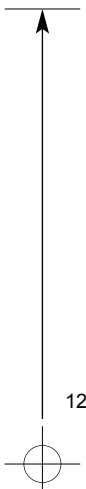
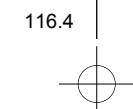
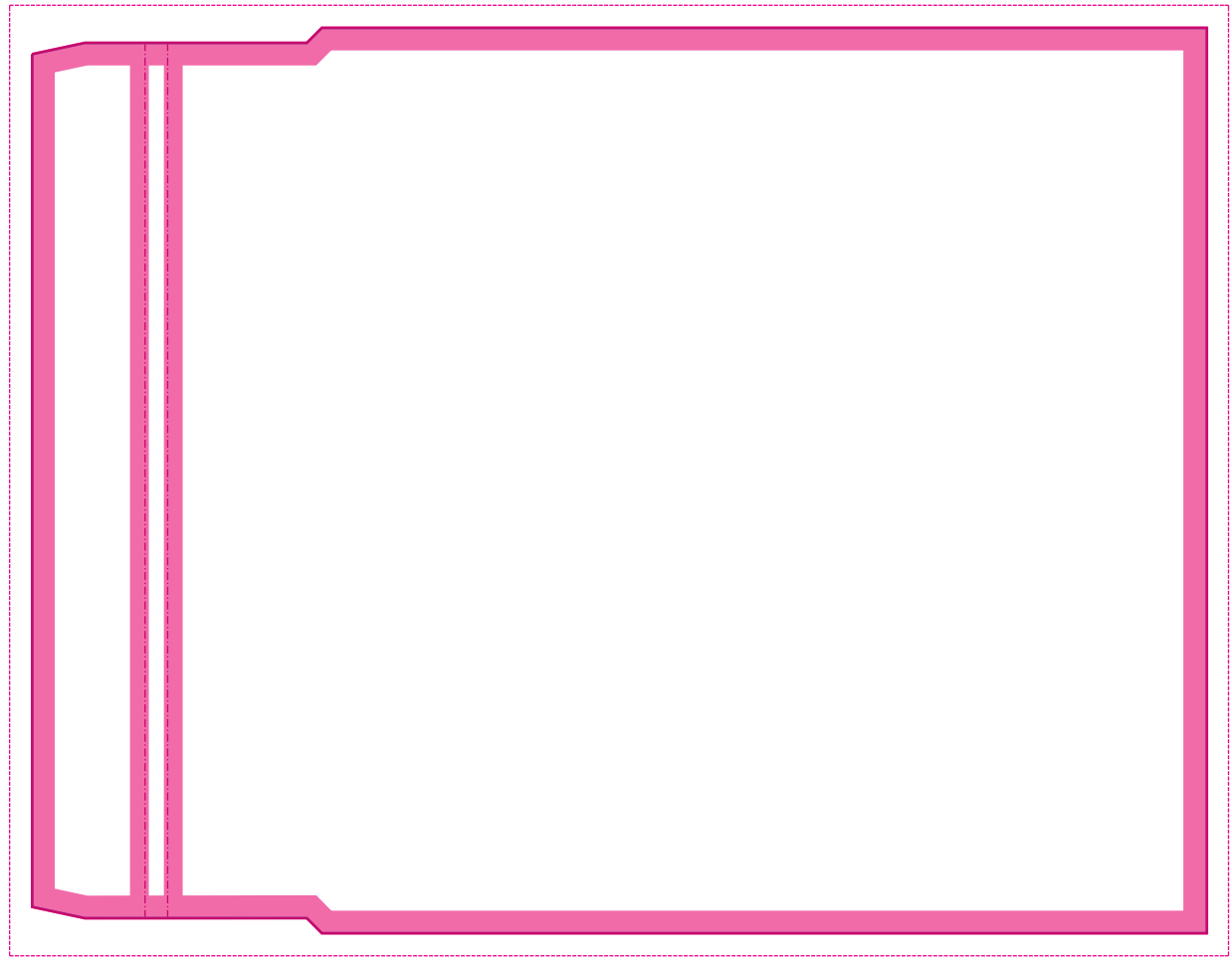
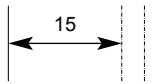


Key:  
No text area  
Bleed  
Trim  
Fold

CTP Template: CD\_CDJ1  
Compact Disc J Card  
Customer  
Catalogue No.  
Job Title

COLOURS  
CYAN  
MAGENTA  
YELLOW  
BLACK



**PLEASE NOTE** THIS TEMPLATE HAS BEEN CREATED USING SPECIFIC CO-ORDINATES REQUIRED FOR COMPUTER TO PLATE IMAGING AND IS NOT TO BE ALTERED, MOVED OR THE DOCUMENT SIZE CHANGED. ALL DIMENSIONS ARE IN MILLIMETRES. BLEED ALLOWANCE OF 3MM ON TRIMMED EDGES